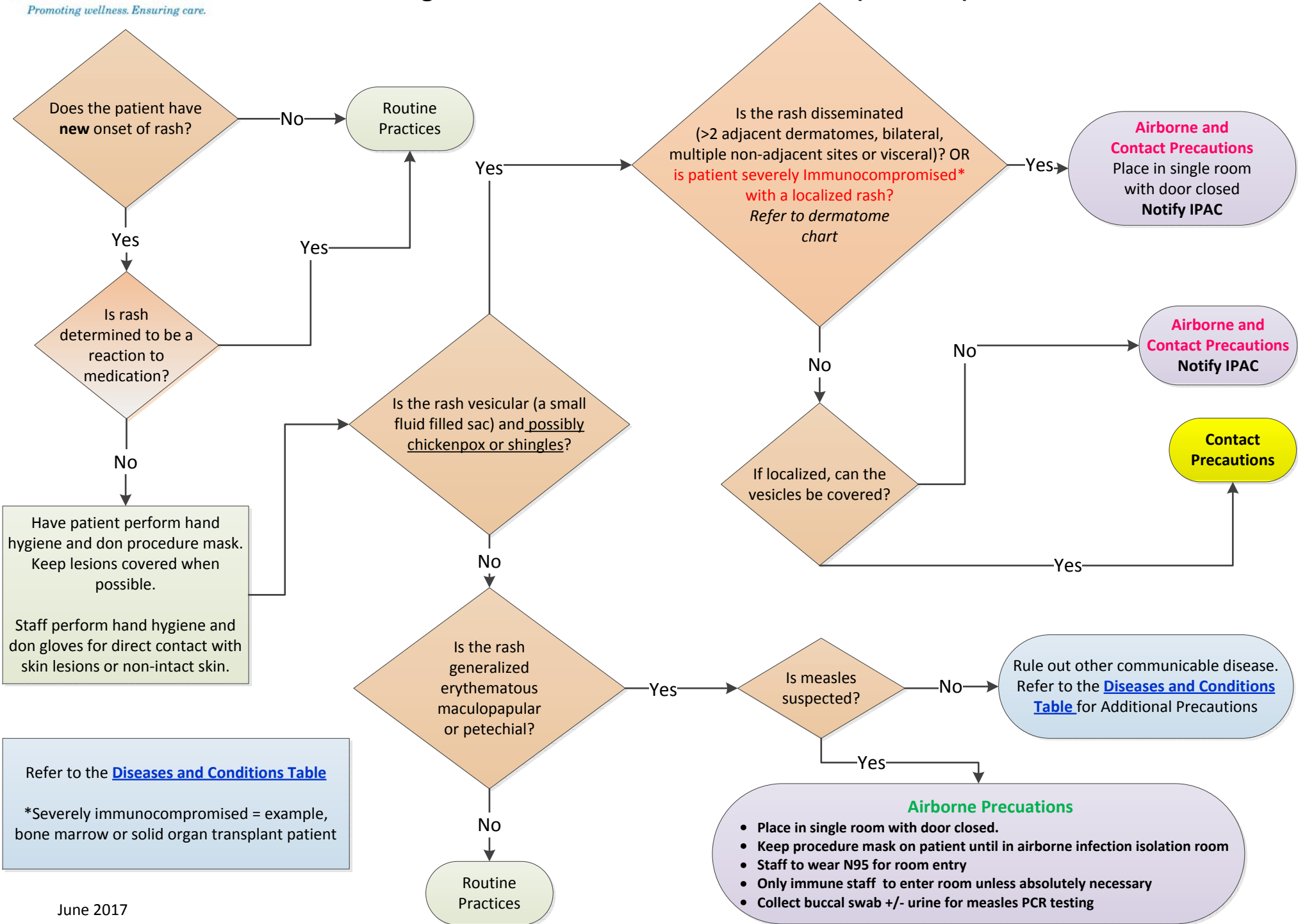


Rash:

Assessing the Need for Additional Precautions (Isolation)



Have patient perform hand hygiene and don procedure mask. Keep lesions covered when possible.

Staff perform hand hygiene and don gloves for direct contact with skin lesions or non-intact skin.

Refer to the [Diseases and Conditions Table](#)

*Severely immunocompromised = example, bone marrow or solid organ transplant patient

- Airborne Precautions**
- Place in single room with door closed.
 - Keep procedure mask on patient until in airborne infection isolation room
 - Staff to wear N95 for room entry
 - Only immune staff to enter room unless absolutely necessary
 - Collect buccal swab +/- urine for measles PCR testing