

COVID-19 in the Community

Train The Trainer *A guide for Education*

*For Clinical Leads in VCH Community
who support front line care providers*

Updated April 3, 2020

**As recommendations may change, please update as
needed regarding COVID-19 safe practices.**



About these slides

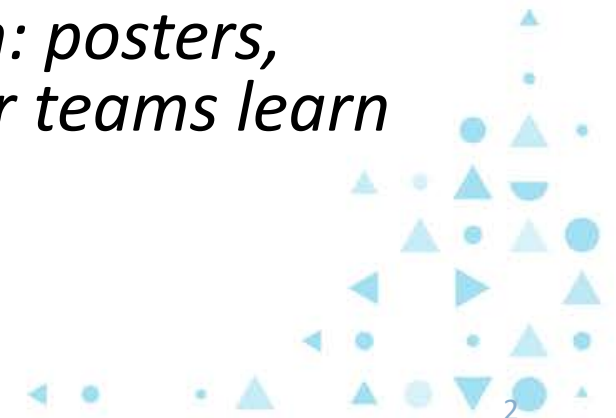
Please note:

- This slide deck is a tool that can be used for COVID-19 education.*
- It is meant to be a framework to guide COVID-19 education delivered to frontline team members at your site.*
- You are required to provide COVID-19 education, and track the staff members who have attended. Please use the attached sign-in sheet and send to email listed on bottom of sheet.*



Sign In Sheet

- Please feel free to add what you need for your education: posters, handouts, video links (ie. don/doff) – you know how your teams learn best.*



LAND ACKNOWLEDGEMENT

We acknowledge that this session, like all those at VCH, is being held on the traditional and unceded territory of the Coast Salish Peoples, including the homelands of the Musqueam, Squamish and Tsleil-Waututh Nations



Musqueam
First Nation



Skwxwú7mesh
Úxwumixw
Squamish Nation



TSLEIL-WAUTUTH NATION
PEOPLE OF THE INLET





WHY PROVIDE THIS EDUCATION?

PURPOSE/LEARNING INTENTIONS FOR YOUR TEAMS:

- Explain **accurate** COVID-19/pandemic information to front-line staff and clients/care-givers/families.
- Encourage pulling together/team work by supporting one another with correct information and procedural direction based on client status.
- Reinforce practical skills of proper hand hygiene and donning/doffing Personal Protective Equipment (PPE).
- Provide opportunity to ask questions/raise concerns.



WEBSITES – SOURCE OF TRUTH

Where do I go for the right information?

- **BC Centre for Disease Control:**
[http://www.bccdc.ca/health-professionals/clinical-resources/novel-coronavirus-\(covid-19\)](http://www.bccdc.ca/health-professionals/clinical-resources/novel-coronavirus-(covid-19))
- **VCH – Infection Prevention & Control:**
<http://ipac.vch.ca/Pages/Emerging-Issues.aspx>
- **VCH – Public Page:**
<http://www.vch.ca/about-us/news/vancouver-coastal-health-statement-on-coronavirus>
- **VCH – Coronavirus updates [staff page]:**
<https://my.vch.ca/news-discussion/novel-coronavirus-update>
- <https://my.vch.ca/news-discussion-site/Documents/COVID-19-VC-Memo-March-18-2020.pdf>





COVID-19: THE FACTS

- **What is COVID-19?**

- Like the flu, with symptoms mostly affecting respiratory systems
- Not particularly hardy – easily destroyed with correct [routine] hygiene measures
- Spread via droplet contact (not airborne)

- **What is a pandemic?**

- Pandemic is a *world-wide* spread of a *newly identified* virus.
- Pandemic is not an indication of how severe the virus might be.

- **What are the main symptoms of COVID 19?**

- Fever -- Dry Cough (NEW) -- Shortness of Breath

- **How do I protect myself/loved ones**

- *Thoughtful and frequent* hand hygiene (soap+water work perfectly!)
- Avoid face touching – portal of entry is mucous membranes, not intact skin
- Ensure **source of truth** for facts!





SCREENING VISITS & CLIENTS

- Is visit essential? (deferred/phone)
- If face-to-face visit needed, ask symptom questions
- At each visit, the first point of contact with client needs to ask the following symptom questions:
 - Do you or anyone living with you have a new or worsening **cough, SOB, fever?**
 - **If required, ask any additional screening questions as per your local process.**
- **IF CLIENT SAYS ‘YES’ TO SYMPTOM QUESTIONS:**
 - follow guidelines regarding the use of PPE
 - remember to recommend self-isolation for clients
 - reassure clients that a ‘YES’ doesn’t mean their health services will stop
- At this time, testing is prioritized for health care staff and break-out clusters





WHO WEARS PPE?

Any staff with direct client contact must follow PPE guidelines

- eg. volunteers, support staff
- **Non-direct** care tasks (2 meters from client), wear gloves only
- **Direct care** (within 2 meters of client): wear mask, eye protection, and gloves (add gown if 'yes' to screening questions or known COVID-19+)

If in a public space, and client is coughing, offer a mask



WHAT IS PPE FOR DROPLET CONTACT PRECAUTIONS?

- Procedure mask, eye protection, gloves, gown
- See IPAC resources for don/doff – post the posters & Watch videos
 - The order of Donning is less crucial than DOFFING!!
 - You may want to run through this in a safety huddle
- N95 required for AGMP - aerosol generating medical procedures (eg. trach, nebulized meds, CPR) *complete list found on IPAC
- And, a note about hand hygiene... we all think we know, but opportunity to review!
 - Eg - how long is 20 seconds?? Chorus to Stayin' Alive, Jingle Bellsx2 – or you choose!



DONNING/DOFFING PPE - 'HOW TO'

Please be sure to use the most up-to-date posters and video links when training staff

- Donning/Doffing PPE
- Hand Hygiene
- Other infection control information

IPAC site: <http://ipac.vch.ca/Pages/Emerging-Issues.aspx>



CLEANING EQUIPMENT

- Dedicate all reusable equipment to clients on Droplet and Contact precautions for suspected or confirmed COVID-19 whenever possible.
- Client care equipment includes any item that will come into direct contact with the client or their immediate environment, e.g., equipment and supplies, toys, books/magazines, electronic devices (tablets), and personal belongings.
- Equipment must be **cleaned and disinfected with a VCH- approved product**
*see IPAC for instructions <http://ipac.vch.ca/Pages/Emerging-Issues.aspx>





IF STAFF REPORT BEING SICK

- VCH is very clear on this:
 - *If you are a health-care worker or medical staff and feel sick, you should:*
 - Put on a mask
 - Finish any essential services you are providing
 - Go home
- Staff testing: will be done for anyone with symptoms of COVID-19: fever, cough, difficulty breathing, chills (asymptomatic won't be tested)
- Returning to work if COVID-19+: Self isolate 10 days, or until symptoms subside (negative test not needed)





TROUBLE SOLVING –

You may wish to use this as a q&a-type conclusion to your huddle:

What would you do if...

- a. Client asks if *they* need to wear a mask
- b. Client asks about being tested
- c. Client has a house guest from out of country or a family member who is experiencing mild respiratory symptoms





RESOURCES

Please refer to the VCH IPAC site for the most updated Community Resources

- Train-the-trainer (this slide deck)
- PPE and Hand Hygiene posters and videos
- Community Care Toolkit
- <http://ipac.vch.ca/Pages/Emerging-Issues.aspx>



QUESTIONS?

