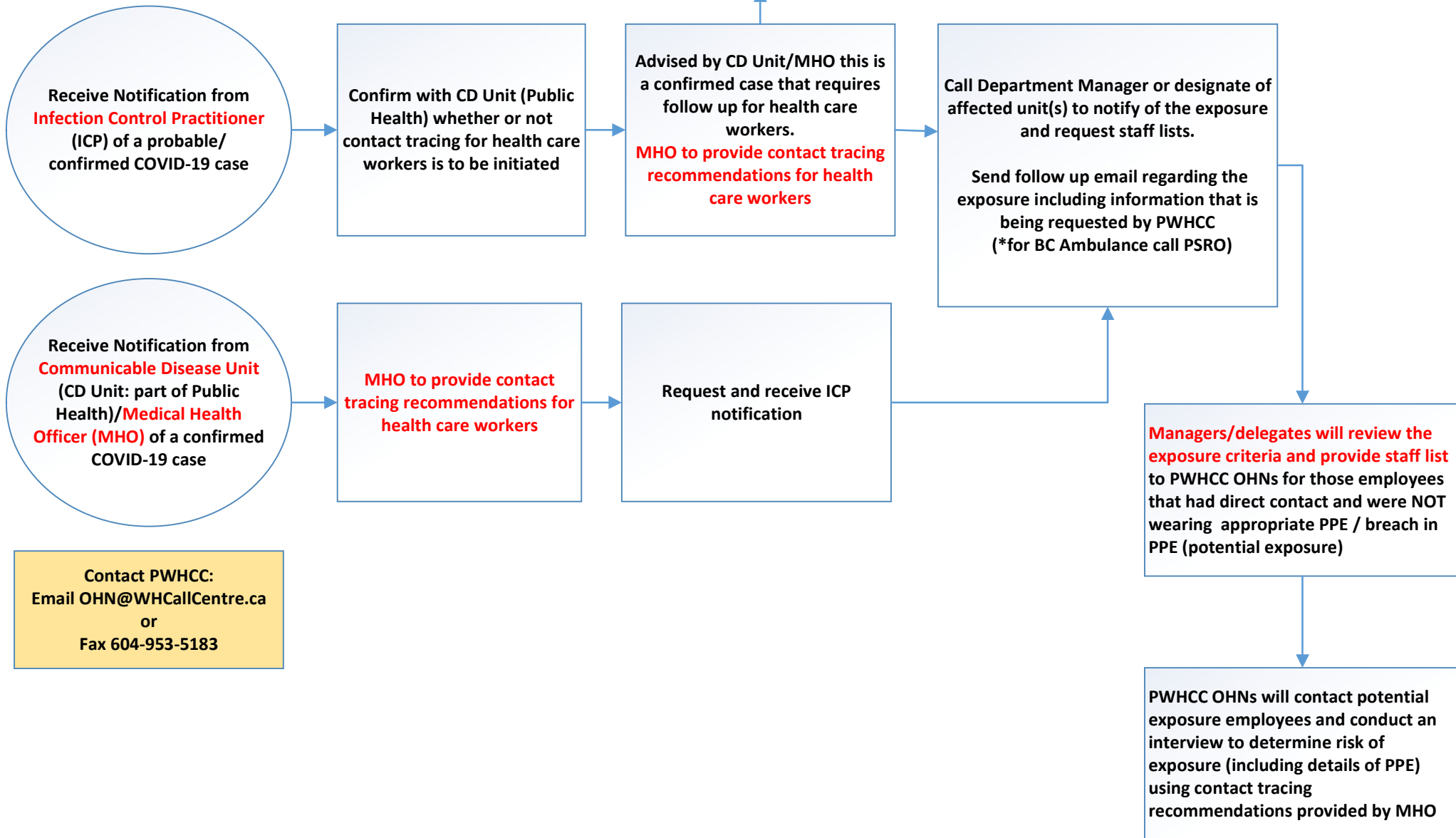


Provincial Workplace Health Call Centre (PWHCC) Process for Contact Tracing of Employees Exposed to a Confirmed COVID-19 Case and Case Was Not Isolated and/or Breach in PPE



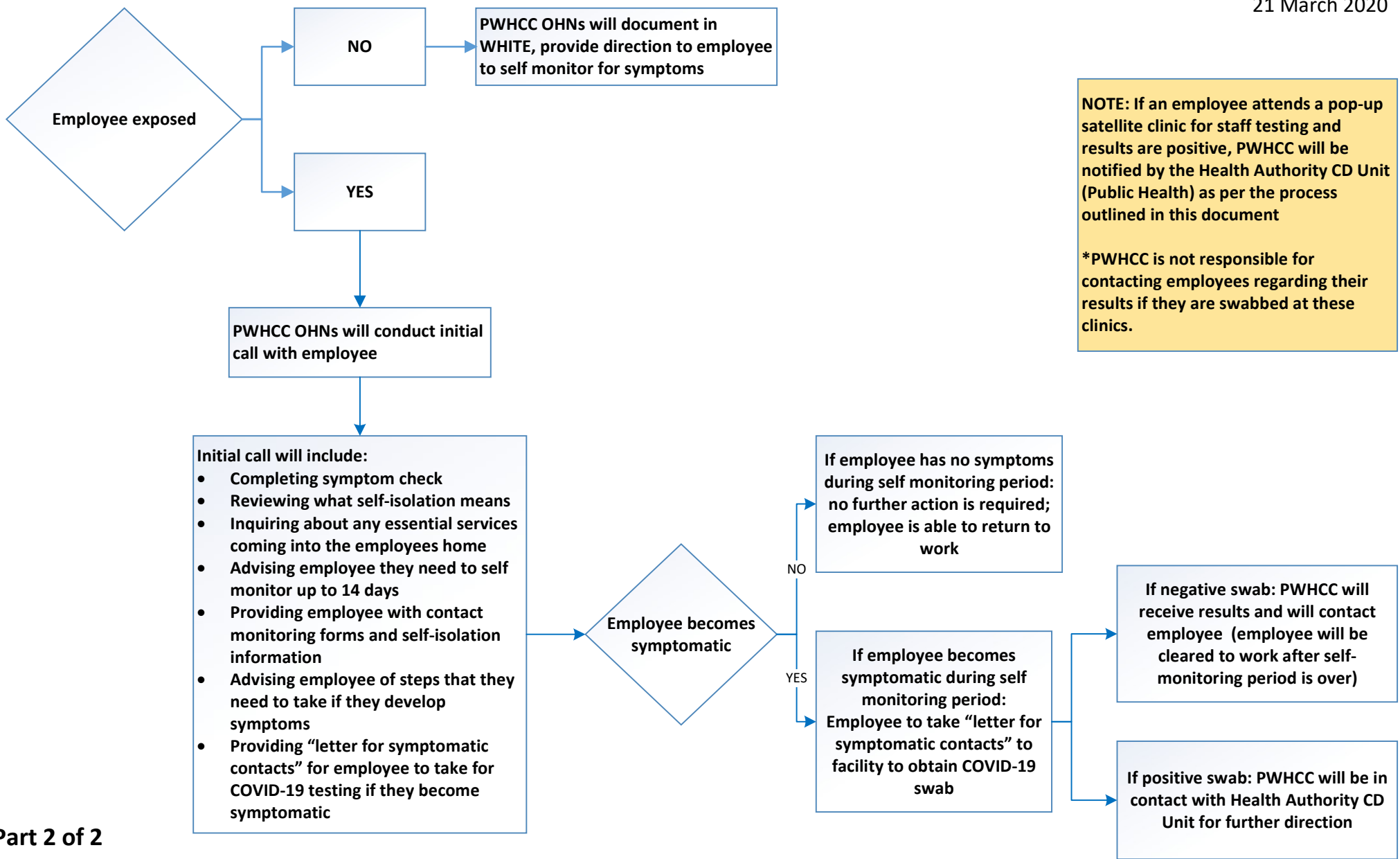
Advised by CD Unit/MHO that no follow up is required for health care workers



Contact PWHCC:
Email OHN@WHCallCentre.ca
or
Fax 604-953-5183

Provincial Workplace Health Call Centre (PWHCC) Process for Contact Tracing of Employees exposed to a confirmed COVID-19 case and case was not isolated and/or breach in PPE

21 March 2020



NOTE: If an employee attends a pop-up satellite clinic for staff testing and results are positive, PWHCC will be notified by the Health Authority CD Unit (Public Health) as per the process outlined in this document

*PWHCC is not responsible for contacting employees regarding their results if they are swabbed at these clinics.