

How are we doing in protecting the VCH healthcare workforce?

Rates since the pandemic began – both incidence rates (Figure 1) and positivity rates (Figure 2) - for COVID-19 in VCH’s healthcare workers (HCWs) (blue line) have mirrored or were lower than the background population (orange line), except for at the very beginning. This was due to a combination of preferential testing access and the PPE requirements being less clear to everyone. Measures put in place by Infection Prevention and Control, and Occupational Health such as Point-of-Care Risk Assessment, droplet-contact precautions and appropriate PPE, have been effective in protecting healthcare workers.



Figure 1

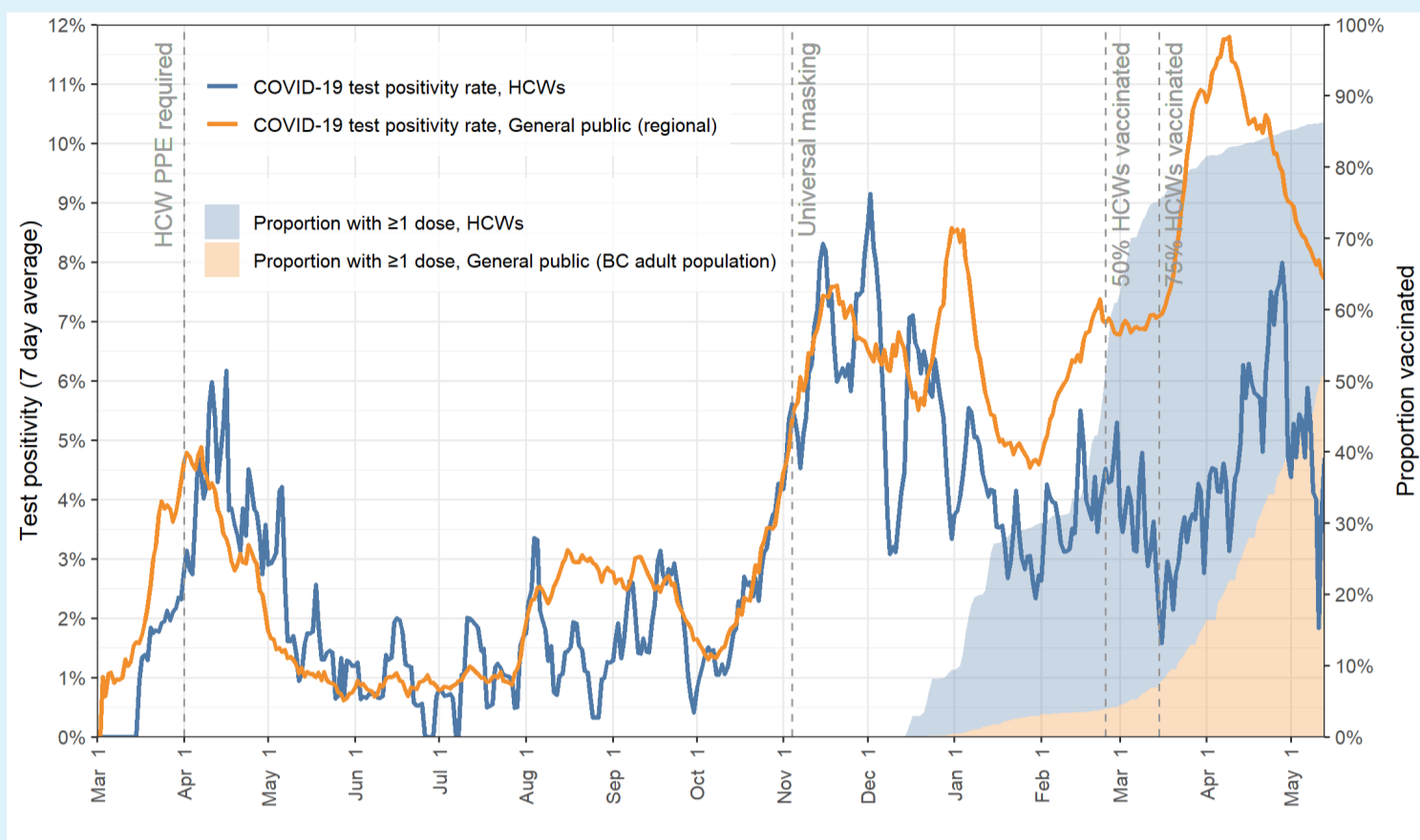
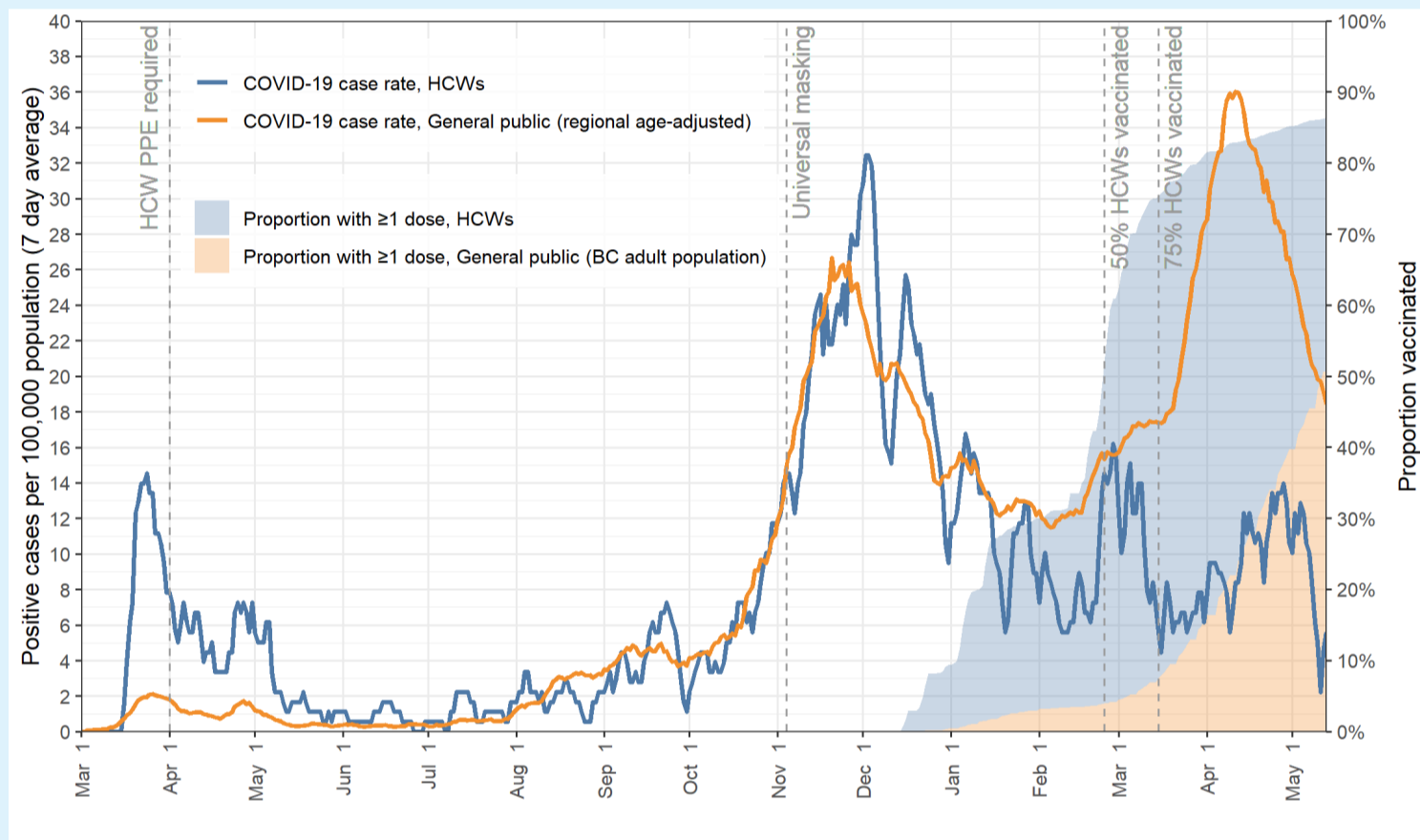


Figure 2



COVID-19 rates in HCWs have continued to remain low as **single-dose vaccination rates of HCWs in VCH have increased (blue shaded area)**, despite the surge in community cases (orange line) – including the P.1. variant of concern. **This shows that our vaccine strategy is effective.** Overall, our public health strategy is working very well, and has brought the third wave has under control very quickly.



Medical staff have demonstrated the lowest incidence of COVID-19, which shows that everyone’s efforts and the high levels of protection are working. We have been vaccinating and getting to the groups most at risk exactly as planned, with the long-term care workers being a high priority.

COVID-19 and Vaccination Rates Among Healthcare Workers

| Occupation (n) | Cummulative COVID-19 rate n (%) | Fully vaccinated n (%) | Partially Vaccinated n (%) | Unvaccinated n (%) |
|-----------------------------|---------------------------------|------------------------|----------------------------|----------------------|
| Nurses (7,637) | 247 (3.2%) | 2,274 (29.8%) | 4,433 (58.0%) | 930 (12.2%) |
| LPN / Care Aide (5,759) | 299 (5.2%) | 2,482 (43.1%) | 2,347 (40.8%) | 930 (16.1%) |
| Administration (4,314) | 114 (2.6%) | 405 (9.4%) | 3,137 (72.7%) | 772 (17.9%) |
| Allied Health (3,906) | 85 (2.2%) | 820 (21.0%) | 2,587 (66.2%) | 499 (12.8%) |
| Medical staff (3,182) | 68 (2.1%) | 1,353 (42.5%) | 1,700 (53.4%) | 129 (4.1%) |
| Support staff (827) | 35 (4.2%) | 120 (14.5%) | 548 (66.3%) | 159 (19.2%) |
| Other or Unknown (950) | 27 (2.8%) | 210 (22.1%) | 609 (64.1%) | 131 (13.8%) |
| Grand Total (25,558) | 837 (3.3%) | 7,328 (28.7%) | 14,790 (57.9%) | 3,440 (13.5%) |

*worked between March 15, 2020 – May 13, 2021. Excludes non-medical contract workers. An individual could have positions in multiple job classes, so can be counted in multiple rows. Grand total only counts each HCW once.



For more detailed information on the methodology, we encourage you to read the [pre-print](#) which is now available. We appreciate everyone’s commitment to protecting yourselves, your colleagues, and all health care workers. If you have any questions, or would like more detailed data, please contact POSH.

