

# Point-of-Care Risk Assessment

*Do I need PPE?*

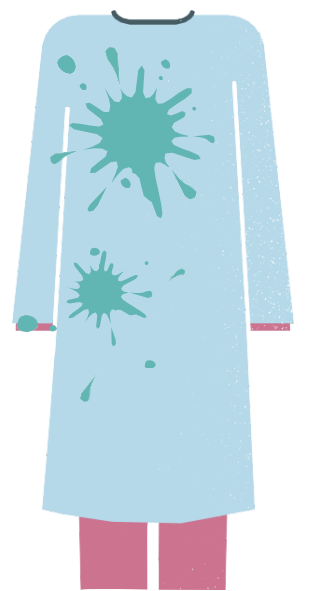


**Before ANY interaction with the patient or their environment ask yourself:**

**Could my clothes or skin come in contact with body fluids, including splashes or sprays?**

*i.e. urine, soiled linen, blood*

**If yes, wear a gown**



**Could my hands come in contact with soiled surfaces, bodily fluids, non-intact skin, or mucous membranes?**

*Gloves do not replace hand hygiene always clean your hand before donning and after doffing gloves*

**If yes, wear gloves**



**Could my eyes, face, or mucous membranes be splashed or sprayed with body fluids or will I be within 2 meters of a coughing or vomiting patient?**

**If yes, wear eye protection & mask**



**Clean your hands.**

Practice good hand hygiene by cleaning your hands with alcohol based hand rub (ABHR) or soap and water before and after contact with the patient and/or their environment.

