

DROPLET PRECAUTIONS

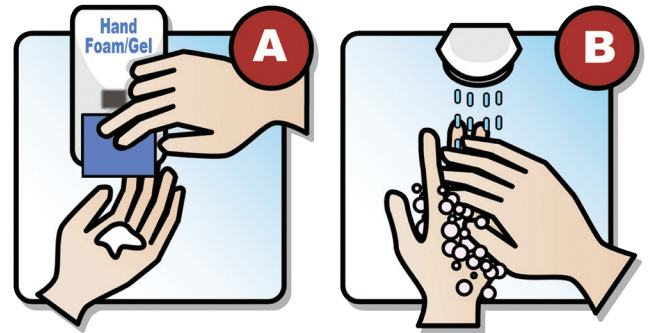
Bed #

Families and visitors:



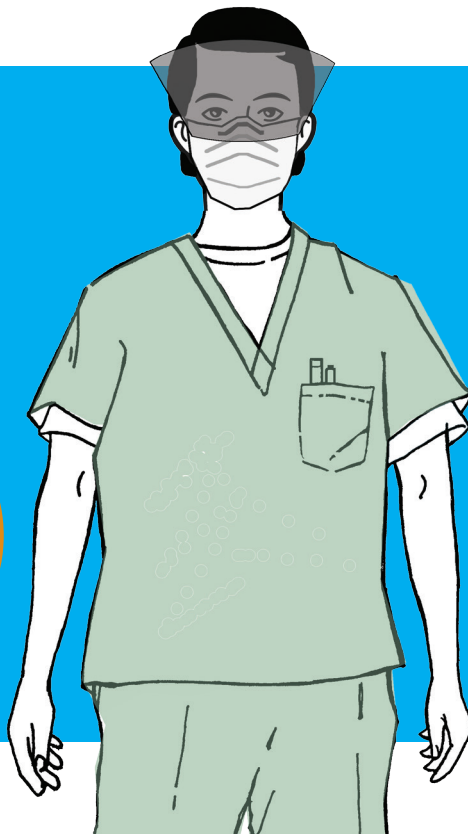
Please report to staff before entering

Clean hands before entering and when leaving room



Clean hands with
A) hand foam/gel or **B)** soap and water

Staff:



Required:

- **Point of Care Risk Assessment**
- **Procedure mask with eye protection**
When within 2 metres of patient
- **Keep 2 metres between patients**

KEEP SIGN POSTED UNTIL ROOM CLEANED
HOUSEKEEPER will remove sign after "Discharge" cleaning

For more information, refer to the Infection Control Manual.

Risk	Protection
<ul style="list-style-type: none"> Contact with patient or environment expected 	<ul style="list-style-type: none"> Hand hygiene
<ul style="list-style-type: none"> Splash or spray of blood or body fluids/secretions anticipated 	<ul style="list-style-type: none"> Mask and eye protection Put on gown if soiling of clothing is likely
<ul style="list-style-type: none"> Contact with mucous membranes Non-intact skin, blood, body fluids, secretions, excretions or soiled or likely soiled item/surface anticipated 	<ul style="list-style-type: none"> Perform hand hygiene, then don gloves Perform hand hygiene after PPE removal and before leaving patient environment

	Contact	Contact Plus	Droplet	Droplet + Contact	Airborne	Airborne+ Contact
Organism-based precautions (examples only; not complete list)	CPO, MRSA, VRE, lice, scabies	<i>C. difficile</i>	<i>N. meningitidis</i> , mumps, pertussis	Influenza, invasive group A <i>Streptococcus</i>	Tuberculosis (TB), measles	Varicella (chickenpox, disseminated herpes zoster)
Syndromic precautions	Draining wound, diarrhea, infestation	Diarrhea and/or vomiting	Stiff neck + fever + headache	Malaise + acute cough + fever, toxic shock	Fever + weight loss + cough + high risk for TB	Disseminated rash + fever
Private room	Preferred. For suspect & confirmed CPO: yes	Preferred	Preferred. If in multi-bed room, draw curtain.	Preferred. If in multi-bed room, draw curtain.	Yes	Yes
Negative pressure room	No	No	No	No	Yes	Yes
Staff PPE	Gown + gloves	Gown + gloves	Procedure mask and eye protection	Procedure mask + eye protection + gown + gloves	N95 respirator	N95 respirator + gown + gloves
Visitor PPE	Gown + gloves if direct care	Gown + gloves	Procedure mask and eye protection	Procedure mask + eye protection (+gown +gloves if direct care)	Offer N95 respirator to visitor	N95 respirator (+gown +gloves if direct care)
Parents of pediatric patients	Clean hands before entering and on leaving room. Do not go into common areas such as patient kitchens, playrooms, school rooms, patient lounges.					
Patient wears a procedure mask during transport	No	No	Yes	Yes	Yes	Yes